

The background is a painting of a coastal landscape. In the foreground, there are dark, rugged mountains with some reddish-brown patches. The middle ground shows a body of water with a few small boats. The sky is filled with large, billowing clouds in shades of white, yellow, and blue. The overall style is impressionistic with visible brushstrokes.

HERALD NIX

The Long View

HERALD NIX

The Long View



December 10, 2016 - January 16, 2017

HEADBONES GALLERY

Artist Catalogue: HERALD NIX - The Long View
Copyright © 2016, Headbones Gallery

This catalog was created for the exhibition *HERALD NIX - The Long View* at Headbones Gallery, Vernon, BC, Canada December 10, 2016 - January 16, 2017.

The Long View Paintings Copyright ©2015-2016 Herald Nix

Commentary Copyright © 2016 Amy Modahl

Rich Fog Micro Publishing, printed in Vernon, BC, 2016

Printed on the Ricoh SP C830DN

All rights reserved. The content of this catalogue is protected by the copyrights of Headbones Gallery. No part of any of the content of this catalogue may be reproduced, distributed, modified, framed, adapted or made available in any form by any photographic, electronic, digital, mechanical, photostat, microfilm, xerography or other means, or incorporated into or used in any information storage and retrieval system, electronic or mechanical, without the prior written permission of Headbones Gallery.

www.headbonesgallery.com

ISBN: 978-1-988707-01-3

RICH FOG



Micro Publishing

HERALD NIX

The Long View



COMMENTARY BY AMY MODAHL



Herald Nix - The Long View
Headbones Gallery - Vernon, British Columbia - 2016

HERALD NIX

The Long View

Herald Nix's new paintings, titled "The Long View," at Headbones Gallery form a musical rhythm of repeated motifs. Like music, passages repeat, but our perception changes each time it's heard, or in this case seen. For this series, Nix, who is also a musician, painted one view of Shuswap Lake over and over again, and as he noted, "it doesn't change as much as your perception of it does each day."

At Headbones Gallery, Nix's small oil paintings on wooden panel line the long narrow gallery space. The same scene of the Shuswap repeats, yet with each image, shifts in weather, light, and mood are conveyed materially in thick or thin paint, bright color or grays, deeply carved lines and scraped surfaces. Walking through the gallery is like experiencing a year on the Shuswap as the days lengthen in spring, then a dark rain cloud moves overhead, only to clear into a hot, sunny August day. The artist began each panel on a new day with its ensuing shift in perception affecting his methods.

In this series titled "The Long View" Nix's repetitions also reveal artistic growth and progress. Skill develops from controlled corrected repetitions of an act. Here it becomes clear that skill, whether facility with paint or music, is a product of practice and self-criticism. We are allowed in to experience the artist approaching the topic anew, questioning and exploring with each panel and day.

Visitors familiar with the Shuswap will recognize and connect to the lake and landforms. These places are so familiar, yet with each day and year, we're different people. Like the days, we have changed. Like the weather, we have altered.

A portion of this series travels back from Calgary's Jarvis Hall Gallery where Nix's September 2016 exhibition received an enthusiastic welcome. Herald Nix is a visual artist and acclaimed musician born and raised in Salmon Arm. He began painting as a child and attended the Vancouver School of Art (now Emily Carr University) as a teen before also pursuing a career in music. His paintings have exhibited across Canada and in the United States.

Amy Modahl - 2016



Herald Nix - The Long View
Headbones Gallery - Vernon, British Columbia - 2016



Herald Nix - The Long View
Headbones Gallery - Vernon, British Columbia - 2016



Herald Nix - The Long View
Headbones Gallery - Vernon, British Columbia - 2016



The Long View # 94 - 2016, Oil on panel, 8.5 x 10.5 inches



The Long View # 93 - 2016, Oil on panel, 8.5 x 10.5 inches



The Long View # 92 - 2016, Oil on panel, 8.5 x 10.5 inches



The Long View # 91 - 2016, Oil on panel, 8.5 x 10.5 inches



The Long View # 90 - 2016, Oil on panel, 8.5 x 10.5 inches



The Long View # 89 - 2016, Oil on panel, 8.5 x 10.5 inches



The Long View # 88 - 2016, Oil on panel, 8.5 x 10.5 inches



The Long View # 87 - 2016, Oil on panel, 8.5 x 10.5 inches



The Long View # 86 - 2016, Oil on panel, 8.5 x 10.5 inches



The Long View # 85 - 2016, Oil on panel, 8.5 x 10.5 inches



The Long View # 84 - 2016, Oil on panel, 8.5 x 10.5 inches



The Long View # 83 - 2016, Oil on panel, 8.5 x 10.5 inches



The Long View # 82 - 2016, Oil on panel, 9.5 x 11.5 inches



The Long View # 81 - 2016, Oil on panel, 9.5 x 11.5 inches



The Long View # 80 - 2016, Oil on panel, 9.5 x 11.5 inches



The Long View # 79 - 2016, Oil on panel, 9.5 x 11.5 inches



The Long View # 78 - 2016, Oil on panel, 9.5 x 11.5 inches



The Long View # 77 - 2016, Oil on panel, 8.5 x 10.5 inches



The Long View # 76 - 2016, Oil on panel, 9.5 x 11.5 inches



The Long View # 75 - 2016, Oil on panel, 9.5 x 11.5 inches



The Long View # 74 - 2016, Oil on panel, 8.5 x 10.5 inches



The Long View # 73 - 2016, Oil on panel, 8.5 x 10.5 inches



The Long View # 72 - 2016, Oil on panel, 8.5 x 10.5 inches



The Long View # 71 - 2016, Oil on panel, 8.5 x 10.5 inches



The Long View # 70 - 2016, Oil on panel, 9.5 x 11.5 inches



The Long View # 69 - 2016, Oil on panel, 8.5 x 10.5 inches



The Long View # 68 - 2016, Oil on panel, 8.5 x 10.5 inches



The Long View # 67 - 2016, Oil on panel, 8.5 x 10.5 inches



The Long View # 66 - 2016, Oil on panel, 8.5 x 10.5 inches



The Long View # 65 - 2016, Oil on panel, 8.5 x 10.5 inches



The Long View # 64 - 2016, Oil on panel, 8.5 x 10.5 inches



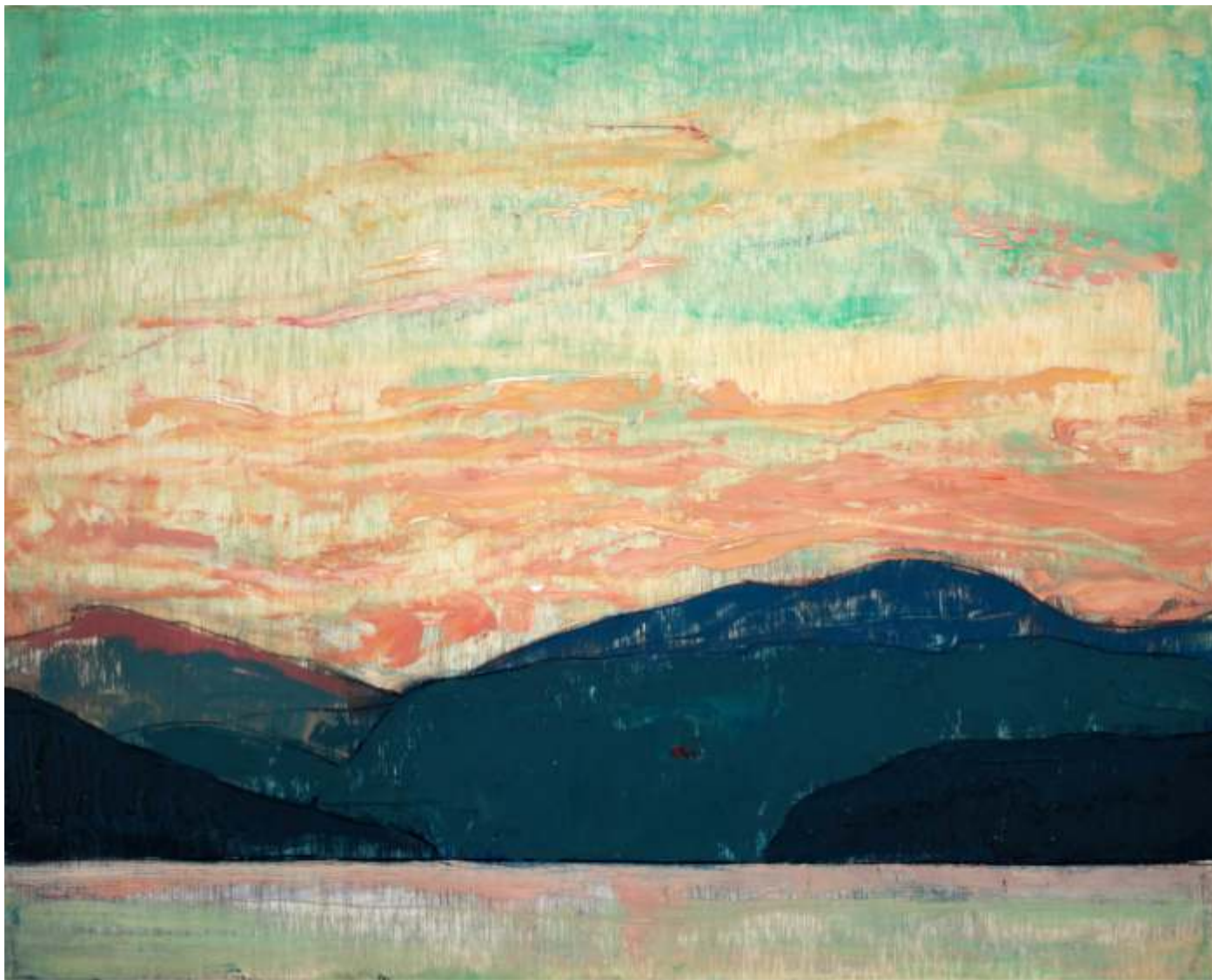
The Long View # 63 - 2016, Oil on panel, 8.5 x 10.5 inches



The Long View # 62 - 2016, Oil on panel, 9.5 x 11.5 inches



The Long View # 61 - 2016, Oil on panel, 8.5 x 10.5 inches



The Long View # 60 - 2016, Oil on panel, 8.5 x 10.5 inches



The Long View # 58 - 2015/2016, Oil on panel, 8.5 x 10.5 inches



The Long View # 56 - 2015/2016, Oil on panel, 8.5 x 10.5 inches



The Long View # 54 - 2015/2016, Oil on panel, 8.5 x 10.5 inches



The Long View # 46 - 2015/2016, Oil on panel, 8.5 x 10.5 inches



The Long View # 42 - 2015/2016, Oil on panel, 8.5 x 10.5 inches



The Long View # 41 - 2015/2016, Oil on panel, 8.5 x 10.5 inches



The Long View # 40 - 2015/2016, Oil on panel, 8.5 x 10.5 inches



The Long View # 36 - 2015/2016, Oil on panel, 8.5 x 10.5 inches



The Long View # 33 - 2015/2016, Oil on panel, 8.5 x 10.5 inches



The Long View # 22 - 2015/2016, Oil on panel, 8.5 x 10.5 inches



The Long View # 21 - 2015/2016, Oil on panel, 8.5 x 10.5 inches



The Long View # 18 - 2015/2016, Oil on panel, 8.5 x 10.5 inches



The Long View # 17 - 2015/2016, Oil on panel, 8.5 x 10.5 inches



The Long View # 15 - 2015/2016, Oil on panel, 8.5 x 10.5 inches



The Long View # 11 - 2015/2016, Oil on panel, 8.5 x 10.5 inches



The Long View # 6 - 2015/2016, Oil on panel, 8.5 x 10.5 inches



The Long View # 4 - 2015/2016, Oil on panel, 8.5 x 10.5 inches



The Long View # 3 - 2015/2016, Oil on panel, 8.5 x 10.5 inches



HEADBONES GALLERY