

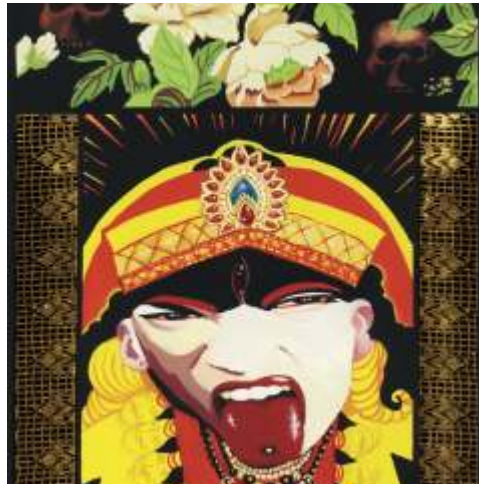


The Drawers - Headbones Gallery

Contemporary Drawing, Sculpture and Works on Paper

Diane Feught

Bona fide
May 17 - June 28, 2007



Commentary by Julie Oakes

Diane Feught

Bona fide

May 17 - June 28, 2007

Artist Catalog, 'Diane Feught - Headbones Gallery, The Drawers '
Copyright © 2007, Headbones Gallery

Commentary by Julie Oakes
Copyright © 2007, Julie Oakes

Images Copyright © 2007, Diane Feught

Rich Fog Micro Publishing, printed in Toronto, 2007
Layout and Design, Rich Fog Micro Publishing

All rights reserved. No part of this work may be reproduced or transmitted in any form or by any means, electronic or mechanical, including photocopying and recording, or by any information storage or retrieval system, except as may be expressly permitted by the 1976 copyright act or in writing from Headbones Gallery. Requests for permission to use these images should be addressed in writing to Diane Feught, c/o Headbones Gallery, 260 Carlaw Avenue, Unit 102, Toronto, Ontario M4M 3L1 Canada
Telephone/Facsimile: 416-465-7352 Email: info@headbonesgallery.com
Director: Richard Fogarty
www.headbonesgallery.com

Diane Feught

Julie Oakes

It is difficult not to use the word 'beauty' in conjunction with Diane Feught's paintings on paper. The fair distribution of attributes creates a sense of divine proportion. There is symmetry between the exoticism of the subject matter and the formal elements of the piece, substantiated by a remarkably adept execution. This balance between the subject and the process provokes a self effacing exclamation of pleasure, an un-selfing, or the "opiate adjacency" that Elaine Scarry in her book "On Beauty" speaks of experiencing when in the presence of beauty. Self consciousness disappears and the ego steps aside, paying honour to the experience and yet retaining enough of the self to appreciate the brush with beauty. The moment extends and repeats itself as memory. This is when the art piece transcends time and the image assumes a life of it's own and although each piece is different one from the other, there is a stream of visual similarity running through the series as if they all belong to the same exquisite circumstance.

How does Diane Feught manage to measure up to the rigorous strictures that define beauty as an elevated state? By breaking down the overall impression into specific elements, there is perfection within each aspect- the color is rich with the compositional placement of the window in a field of patterning (applied with stencil or linocut repetition) promoting a feeling of luxurious elegance. The gold and silver leaf, the graceful patterns of wall paper or floral material, the framing of the windows with slats or seemingly carved embellishments, all lend an aura of aristocracy as if the world is the site of a series of exquisite peeks.

Diane Feught also brings into play cultural particulars using costumes, a blushing light, a wan, consumptive complexion, a chocolate skin, or a faded nostalgia to shuttle between the past, the present and the future or to fly across oceans or catch a searing glimpse of an art nouveau flash of eroticism. She is a steward of the strange and curious having formed close acquaintances with the denizens of her own imagination. She brings forth an affirmation of beauty from the wonderful panoply of existence and offers the chance to saturate in the pleasure through the grateful distraction of a phenomenal art piece.



Annunciation
gouache & metal leaf on paper, 22 x 17 inches
2007



Madonna
gouache & metal leaf on paper, 22 x 17 inches
2007



Manju-she-ri
gouache & metal leaf on paper, 22 x 17 inches
2007



Chinrezig
gouache & metal leaf on paper, 22 x 17 inches
2007



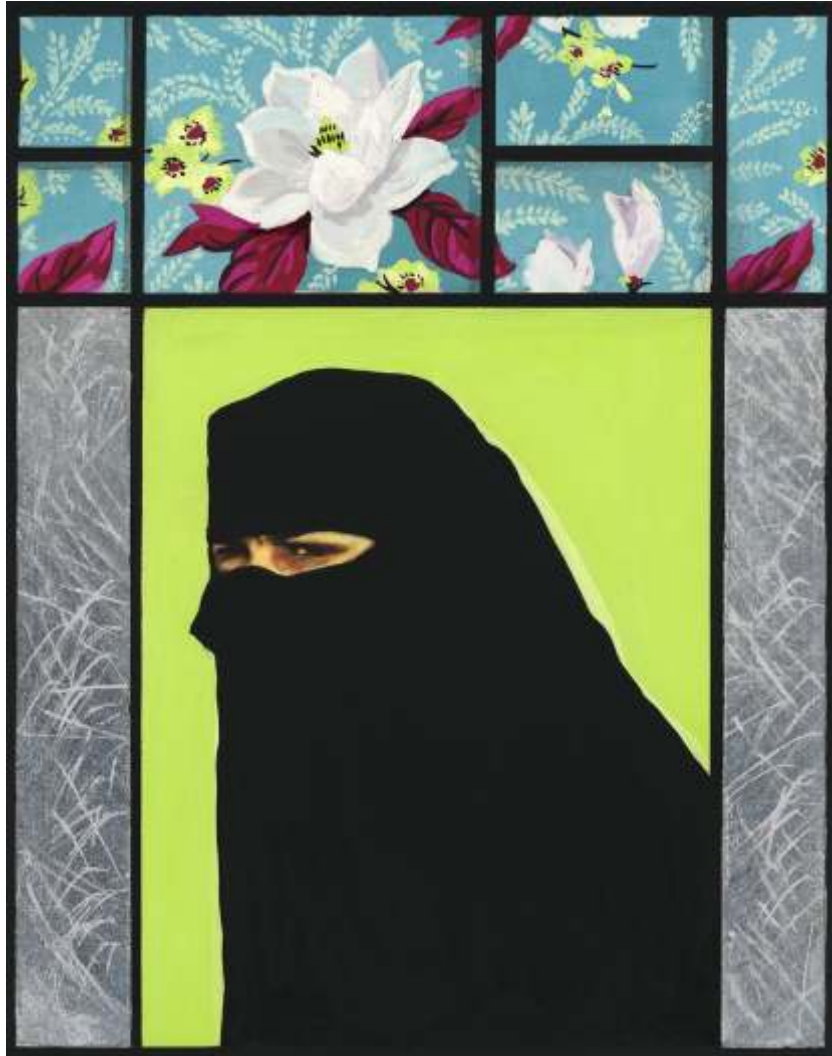
YabYum
gouache & metal leaf on paper, 22 x 17 inches
2007



Vipassana
gouache & metal leaf on paper, 22 x 17 inches
2007



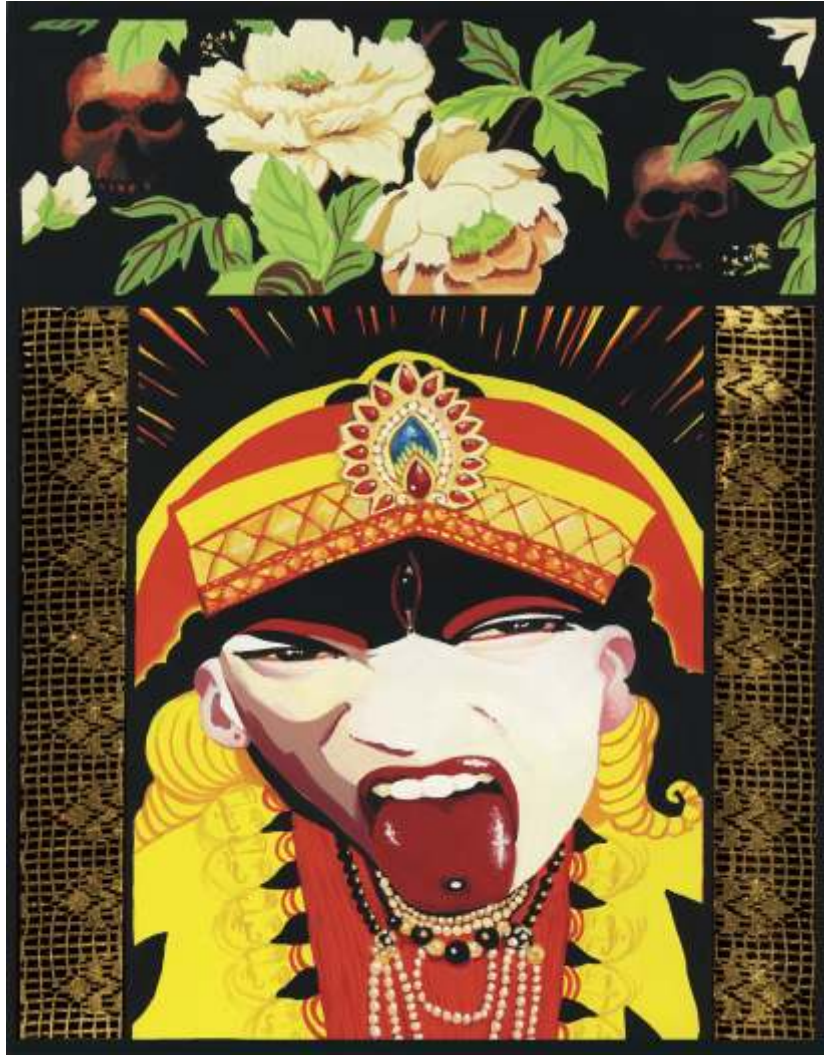
Chinnamasta
gouache & metal leaf on paper, 22 x 17 inches
2007



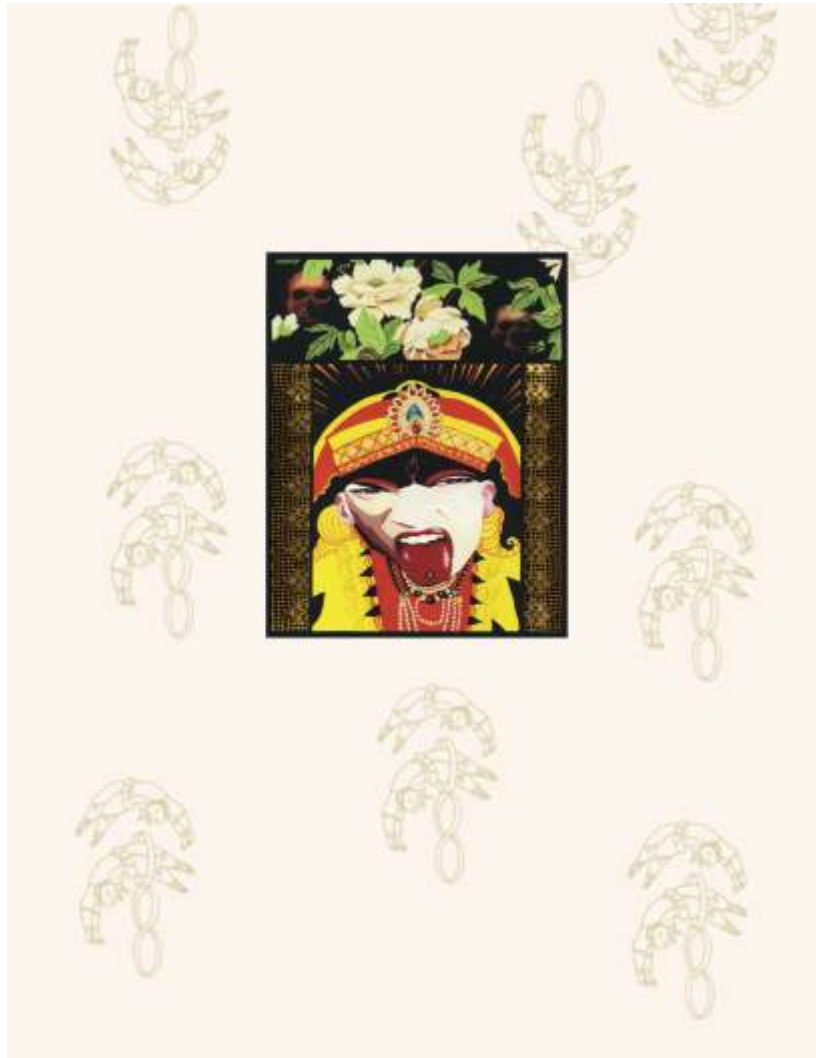
Dakini
gouache & metal leaf on paper, 22 x 17 inches
2007



Aphrodite
gouache & metal leaf on paper, 22 x 17 inches
2007



Kali-Ma
detail



Kali-Ma
gouache & metal leaf on paper, 22 x 17 inches
2007

Diane Feught

EDUCATION:

1970 BFA, University of Alberta, Edmonton AB
1985 Dip. Graphic Design, MacEwan College

PROFESSIONAL EXPERIENCE:

1972, Sessional instructor, U of A
1973-85, Glass artist/Architectural installations (church, public, private) 1989-1996,
Designer, illustrator 1996-1999, Software/multimedia designer, Axion Spatial Imaging 1999 -
present, Designer, artist

EXHIBITIONS:

Ring House Gallery, University of Albertas
Latitude 53 Gallery, Edmonton AB
The Works, Edmonton AB
Robert Vanderleelie Gallery, Edmonton AB
SUB Gallery, Edmonton AB
Banff Centre, Banff AB

AWARDS:

1995, ACE GOLD Award of Excellence, Traditional illustration 1995, ACE GOLD Award of
Excellence, Product design 1995, ACE bronze Award of Excellence, Poster design 1996,
Alberta Book Cover Award 1999, Gold Award Best Software Design (Canada) Axion 3D
World Atlas

COLLECTIONS:

Alberta Art Foundation
Edmonton Opera
Grant MacEwan College
Peter Hemmingway Architects
Government of Alberta / Government House

RICH FOG



Micro Publishing
Toronto Canada